

MOVE-IN READY



COUNTRYWIDE

DETACHED HOME FOR SALE IN
BOND HEAD

PLANK ROAD
(LOT 138), BRADFORD
WEST GWILLIMBURY

OFFERED AT

~~\$1,349,990~~
\$1,299,990



2,923 SQ.FT



4 BEDS



4.5 BATHS



2 CAR GARAGE



FRONTAGE
42'



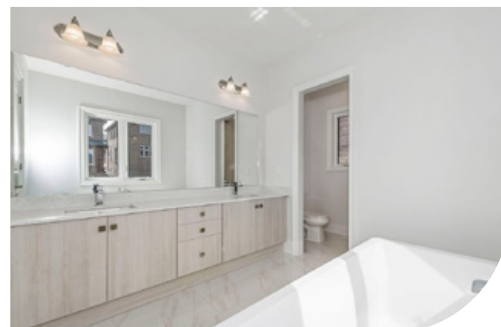
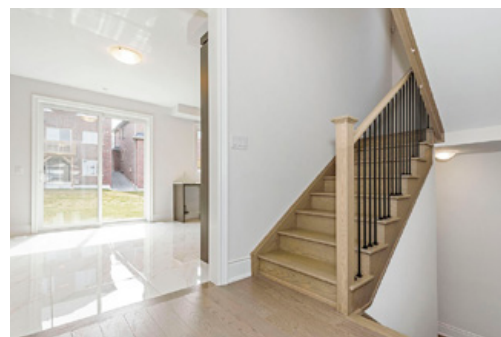
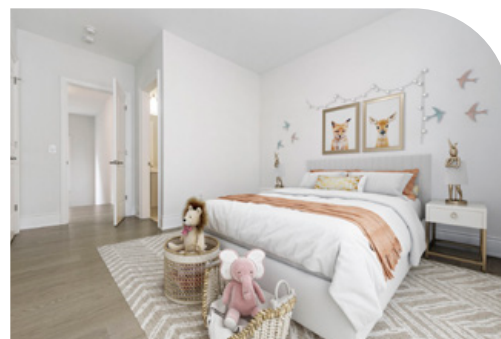
MOVE IN
READY

Sales Representatives: **Michele Thompson**
Frank Ettore

647 979 9278
905 872 2003

FEATURES

- Premium, extra deep lot with no sidewalk and side door entrance
- 9' ceilings throughout, including basement
- Smooth ceilings throughout
- Hardwood flooring throughout
- 4-bedroom home each with their own ensuite
- Primary retreat featuring spa-like ensuite with frameless glass shower and rain head, free standing tub, and double sinks
- Upgraded custom kitchen featuring extended upper cabinets and crown moulding
- Central vacuum system included



E. & O. E. © 2025 CountryWide Homes. All rights reserved. Brokers Protected.